

# 8. Elegia

Piano  
Tubular Bells

Teekkarispeksi 2017

Marko Rintamäki

## Intro

♩=90

Am G F E Am G F E

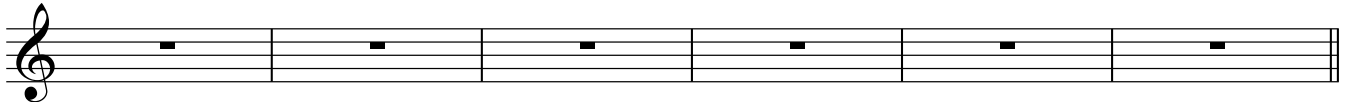


## Säk 1

9 Am Em Dm Am Dm G C E Dm G



19 C E Dm C E E Am



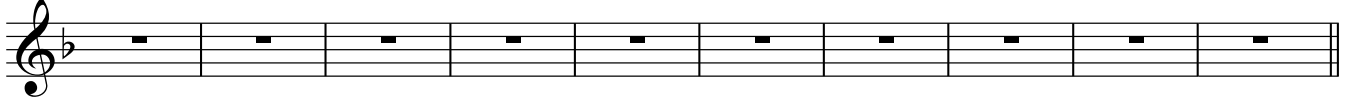
## Nosto

## Säk 2

25 Am G F E C Dm Am Gm Dm Gm C



35 F A Gm C F A Gm A A Dm  
Tubular Bells

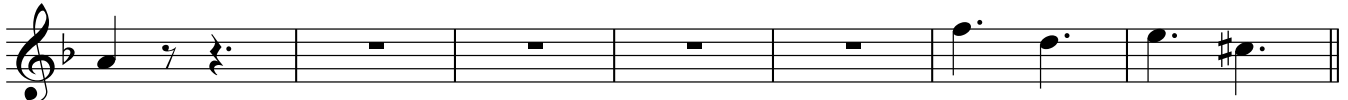


## Välihuuto

45 Dm Am Gm Dm Gm C F  
Tuhottoman iso kirkonkello



52 A Gm C F A Gm A



## Säk 3

59 Dm Am Gm Dm Gm C F A



## Lopetus

67 Gm C F A Gm A Dm

