

Flute
Clarinet in B \flat
Tenor Saxophone
Trumpet in B \flat
Trombone

8. Elegia

Teekkarispeksi 2017

Marko Rintamäki

Viola
♩=90 **Intro**

Musical notation for the first system of the Intro section, measures 1-8. The system includes staves for Flute, Clarinet in B \flat , Tenor Saxophone, Trumpet in B \flat , Trombone, and Viola. The key signature is one sharp (F#) and the time signature is 6/8. The first four measures contain rests for all instruments. The Viola part begins in measure 5 with a series of quarter notes: G4, A4, B4, C5, D5, E5, F#5. The dynamic marking *p* is indicated below the notes.

Musical notation for the second system of the Intro section, measures 5-8. This system continues the Viola part from the previous system. The dynamic marking *p* is indicated below the notes.

Musical notation for the third system of the Intro section, measures 9-8. This system continues the Viola part. The dynamic marking *p* is indicated below the notes.

9 **Säka** < > < > < > < > < > < > < >

Musical notation for the first system of the Säka section, measures 9-10. This system includes staves for Flute, Clarinet in B \flat , Tenor Saxophone, Trumpet in B \flat , Trombone, and Viola. All instruments play a sustained note for the duration of the section. The dynamic marking **10** is indicated below the staves.

Musical notation for the second system of the Säka section, measures 9-10. This system continues the sustained notes for all instruments. The dynamic marking **10** is indicated below the staves.

Musical notation for the third system of the Säka section, measures 9-10. This system continues the sustained notes for all instruments. The dynamic marking **10** is indicated below the staves.

19

p *mf*

p *mf*

p *gliss.* *mf*

p

25 **Nosto** **Säk 2**

4 10

4 10

4 10

4 10

4 10

4 10

Välihuuto

44

Glissandola?

mf

51

58

Säk 3

63

Lopetus

Flute

8. Elegia

Teekkarispeksi 2017

Marko Rintamäki

♩=90

Intro

8

Säk 1

12

2

Nosto

25

4

Säk 2

12

2

Välihuuto

45

3

2

54

59

Säk 3

7

Lopetus

11

8. Elegia

Clarinet in B \flat

Teekkarispeksi 2017

Marko Rintamäki

$\text{♩} = 90$

Intro 8 **Säk 1** 12 2

p

25 **Nosto** 4 **Säk 2** 12 2

Välihuuto

45 3 2

54

59 **Säk 3** 7 **Lopetus** 11

Tenor Saxophone

8. Elegia

Teekkarispeksi 2017

Marko Rintamäki

♩=90

Intro

4

p

9 **Säk 1**

10 2

p *mf*

25 **Nosto** **Säk 2**

4 10 2

Välihuuto

45 3 2

56 **Säk 3**

63 **Lopetus**

11

8. Elegia

Trumpet in B \flat

Teekkarispeksi 2017

Marko Rintamäki

$\text{♩} = 90$

Intro 8 **Säk 1** 10 2

24 **Nosto** 4 **Säk 2** 10 2

44 **Välihuuto** 3 2

53

59 **Säk 3**

Lopetus 67 11

Trombone

8. Elegia

Teekkarispeksi 2017

Marko Rintamäki

♩=90

Intro

4

p

9 **Säk 1**

10 2

p *gliss.* *mf*

Nosto

25

Säk 2

4 10 2

mf

Välihuuto

45

Glissandolla?

3 2

mf

57

Säk 3

63

Lopetus

11

mf

Drum Set

8. Elegia

Teekkarispeksi 2017

Marko Rintamäki

Intro

Pelti crescendo juttuja tyylikkäästi

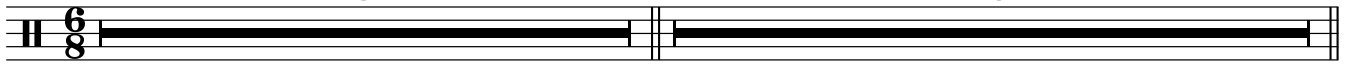
Säk 1

Pelti kiinni

♩=90

8

16

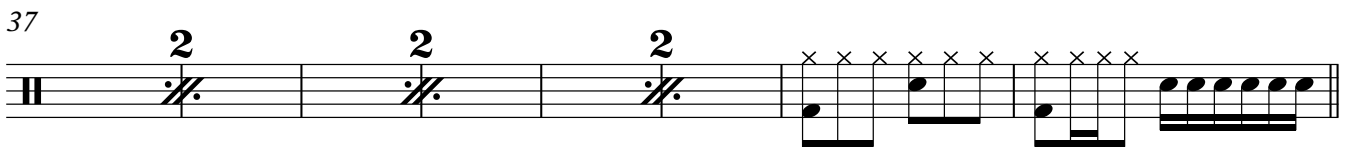


Nosto

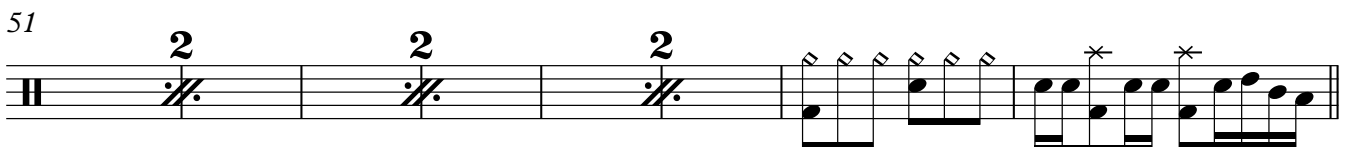
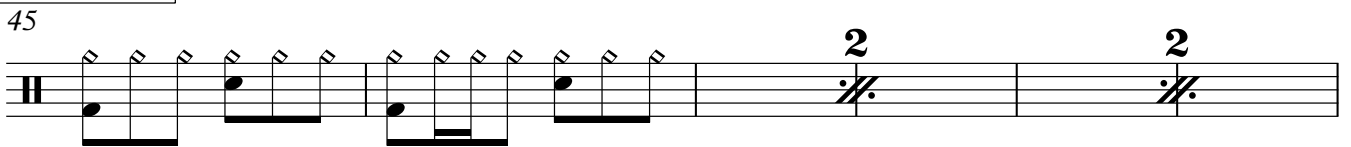
25 Lisäksi pelticresendojuttuja



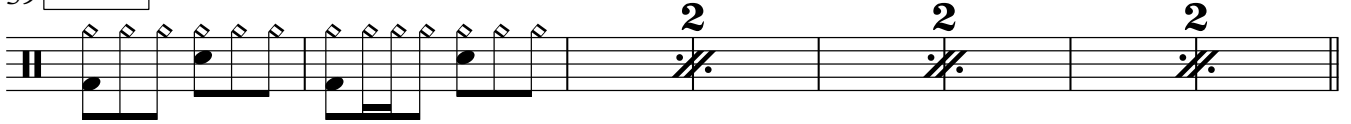
Säk 2



Välihuuto



Säk 3



Lopetus



8. Elegia

Teekkarispeksi 2017

Marko Rintamäki

♩=90

Intro

Am G F E Am G F E
 Alkuperäinen on hyvä, ota omat kivat käännökset

Säk 1

9 Am Em Dm Am Dm G C E

17 Dm G C E Dm E E Am

Nosto

25 Am G F E C

Säk 2

29 Dm Am Gm Dm Gm C F A

37 Gm C F A Gm A A Dm

Välihuuto

45 Dm Am Gm Dm Gm C F
 Isoa säästystä samalla soundilla, saa täyttää enemmän 8-osia

52 A Gm C F A Gm A

Säk 3

59 Dm Am Gm Dm Gm C F A

Lopetus

67 Gm C F A Gm A Dm
 Seuraa laulajaa, hienot omat käännökset 2

8. Elegia

Teekkarispeksi 2017

Marko Rintamäki

Intro

♩=90

Am G F E Am G F E

Säk 1

9 Am Em Dm Am Dm G C E Dm G C

Nosto

20 E Dm E E Am Am G F

Säk 228 E C Dm Am Gm Dm
Jotain löysää taustamättö

33 Gm C F A Gm

38 C F A Gm A

Välihuuto43 A Dm Dm Am Gm
Jotain tiukkaa taustamättö

48 Dm Gm C F A

53 Gm C F A Gm

Säk 3

58 A Dm Am Gm Dm

V.S.

Electric Guitar

63 Gm C F A

Lopetus

67 Gm C F A Gm A Dm 2

Bass Guitar

8. Elegia

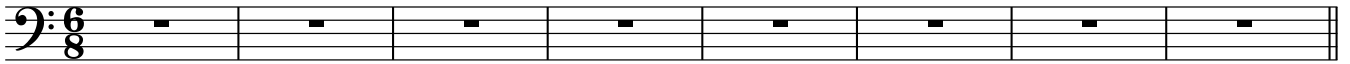
Teekkarispeksi 2017

Marko Rintamäki

Intro

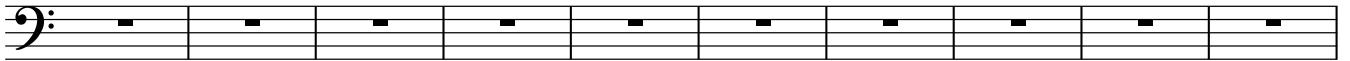
Am G F E Am G F E

♩=90

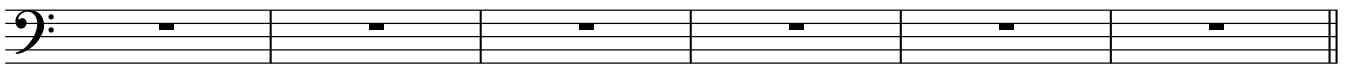


Säk 1

9 Am Em Dm Am Dm G C E Dm G



19 C E Dm E E Am



Nosto

Säk 2

25 Am G F E C Dm Am Gm Dm Gm C



35 F A Gm C F A Gm A A Dm



Välihuuto

45 Dm Am Gm Dm Gm C F A Gm C F



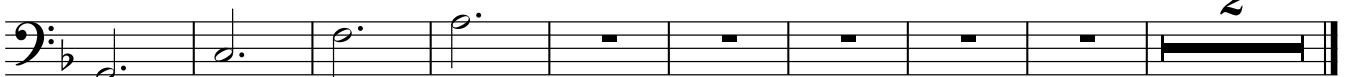
Säk 3

56 A Gm A Dm Am Gm Dm Gm C F A



Lopetus

67 Gm C F A Gm A Dm



Soprano Solo

8. Elegia

Teekkarispeksi 2017

Marko Rintamäki

♩=90

Intro

8

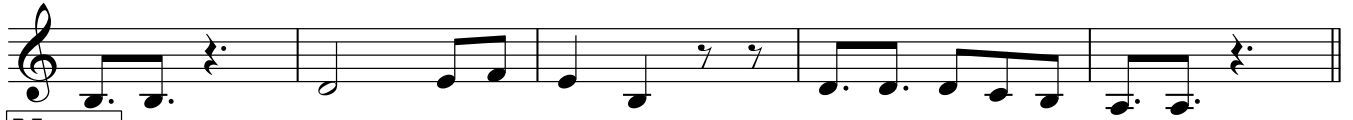
Säk 1



14



20



Nosto

25

Säk 2

4

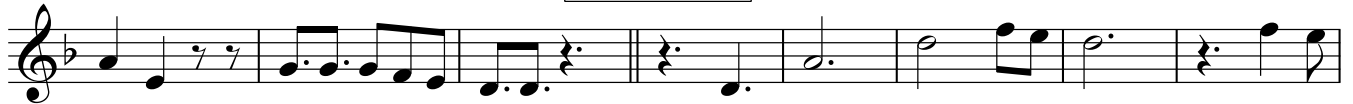


35



Välihuuto

42



50



Säk 3

58



65

Lopetus



71



Voice

8. Elegia

Teekkarispeksi 2017

Marko Rintamäki

♩=90

Intro



Mmm..

p

Uuu...

7

Säk 1

16



Nosto

25

4

Säk 2

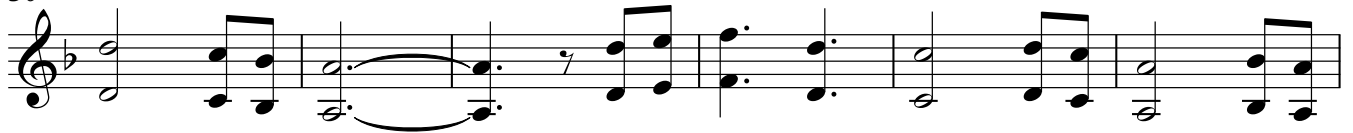
16

Välihuuto



Aaa...

50



56

Säk 3

8



Lopetus

67

11



8. Elegia

Piano
Tubular Bells

Teekkarispeksi 2017

Marko Rintamäki

Intro

♩=90

Am G F E Am G F E

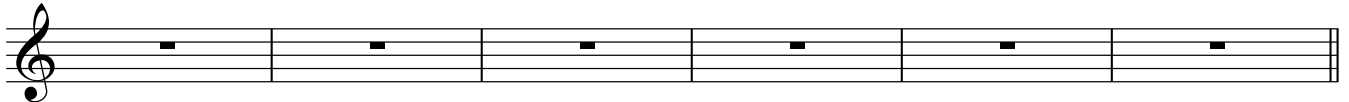


Säk 1

9 Am Em Dm Am Dm G C E Dm G



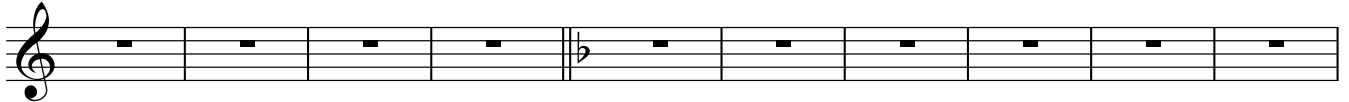
19 C E Dm C E E Am



Nosto

Säk 2

25 Am G F E C Dm Am Gm Dm Gm C



35 F A Gm C F A Gm A A Dm
Tubular Bells

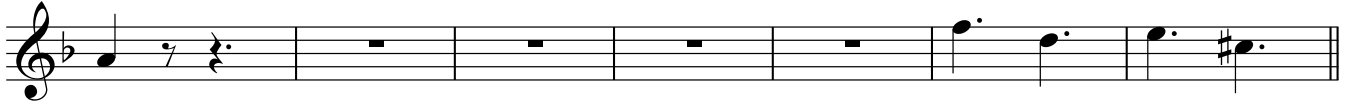


Välihuuto

45 Dm Am Gm Dm Gm C F
Tuhottoman iso kirkonkello



52 A Gm C F A Gm A



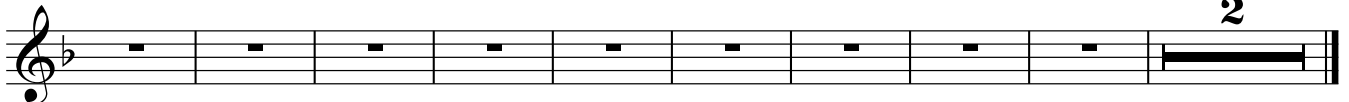
Säk 3

59 Dm Am Gm Dm Gm C F A



Lopetus

67 Gm C F A Gm A Dm



Keyboard
Organ

8. Elegia

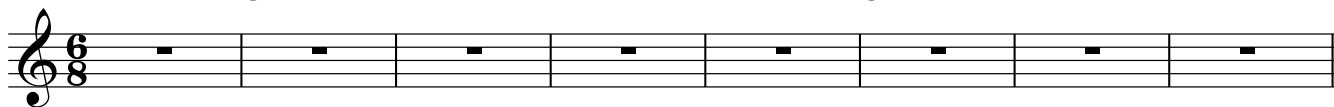
Teekkarispeksi 2017

Marko Rintamäki

Intro

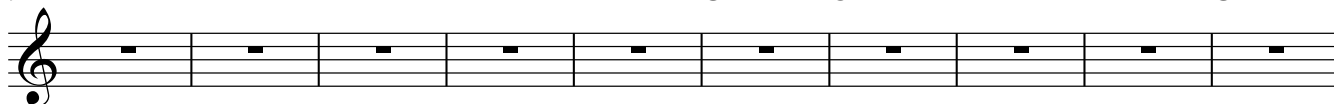
♩=90

Am G F E Am G F E

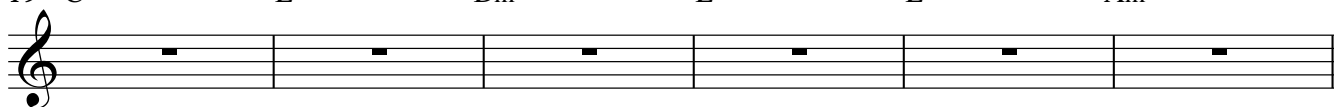


Säk 1

9 Am Em Dm Am Dm G C E Dm G



19 C E Dm E E Am

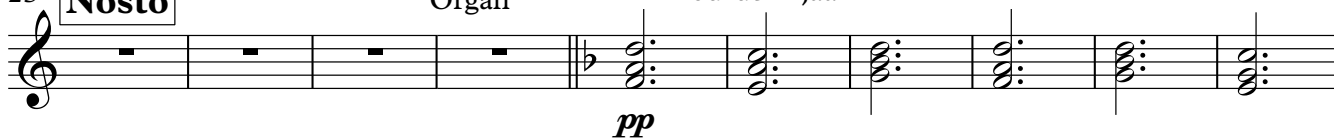


Säk 2

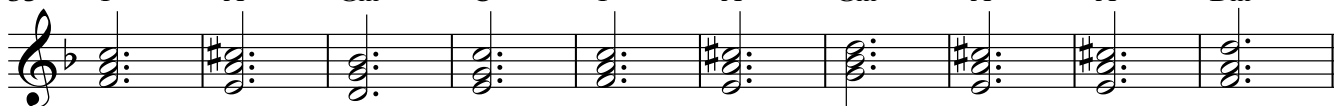
25 Am G F E C Dm Am Gm Dm Gm C

Nosto

Organ
Kirkkourut hiljaa

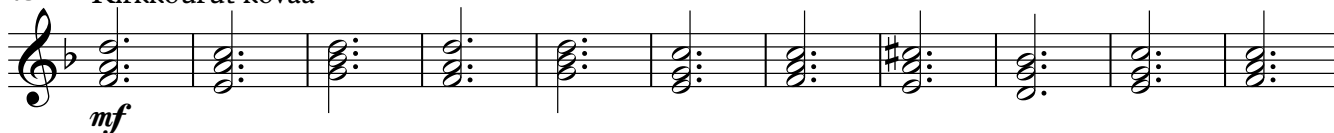


35 F A Gm C F A Gm A A Dm



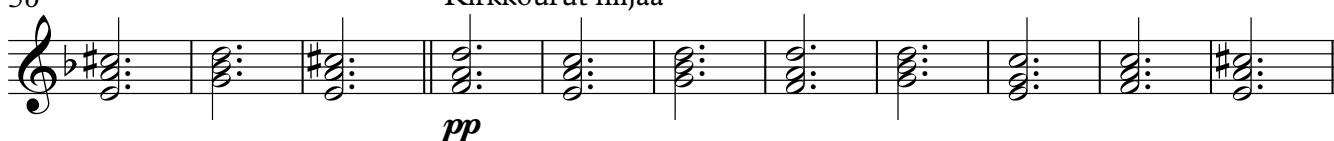
Välihuuto

45 Dm Am Gm Dm Gm C F A Gm C F
Kirkkourut kovaa



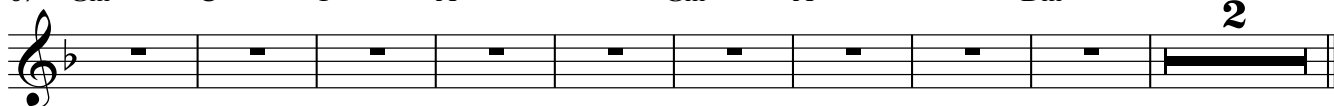
Säk 3

56 A Gm A Dm Am Gm Dm Gm C F A
Kirkkourut hiljaa



Lopetus

67 Gm C F A Gm A Dm



Viola

8. Elegia

Teekkarispeksi 2017

Marko Rintamäki

♩=90

Intro

Musical notation for the Intro section, measures 1-8. The key signature has one flat (B-flat) and the time signature is 6/8. The notes are: G4, A4, B4, C5, B4, A4, G4, F4.

9 Säk 1

Musical notation for Säk 1 section, measures 9-14. Measures 9-12 are a whole rest. Measure 13 contains a half note G4. Measure 14 contains a half note G4. Dynamics: *p*.

Nosto

25

Musical notation for Nosto section, measures 25-30. Measures 25-26 are a whole rest. Measure 27 contains a half note G4. Measure 28 contains a half note G4. Measure 29 contains a half note G4. Measure 30 contains a half note G4. Dynamics: *p*.

Säk 2

Välihuuto

45

Musical notation for Välihuuto section, measures 45-51. Measure 45 contains a half note G4. Measure 46 contains a half note G4. Measure 47 contains a half note G4. Measure 48 contains a half note G4. Measure 49 contains a half note G4. Measure 50 contains a half note G4. Measure 51 contains a half note G4. Dynamics: *mf*.

52

Musical notation for Välihuuto section, measures 52-58. Measure 52 contains a half note G4. Measure 53 contains a half note G4. Measure 54 contains a half note G4. Measure 55 contains a half note G4. Measure 56 contains a half note G4. Measure 57 contains a half note G4. Measure 58 contains a half note G4.

59 Säk 3

Lopetus

Musical notation for Säk 3 and Lopetus sections, measures 59-70. Measures 59-66 are a whole rest. Measure 67 contains a half note G4. Measure 68 contains a half note G4. Measure 69 contains a half note G4. Measure 70 contains a half note G4.